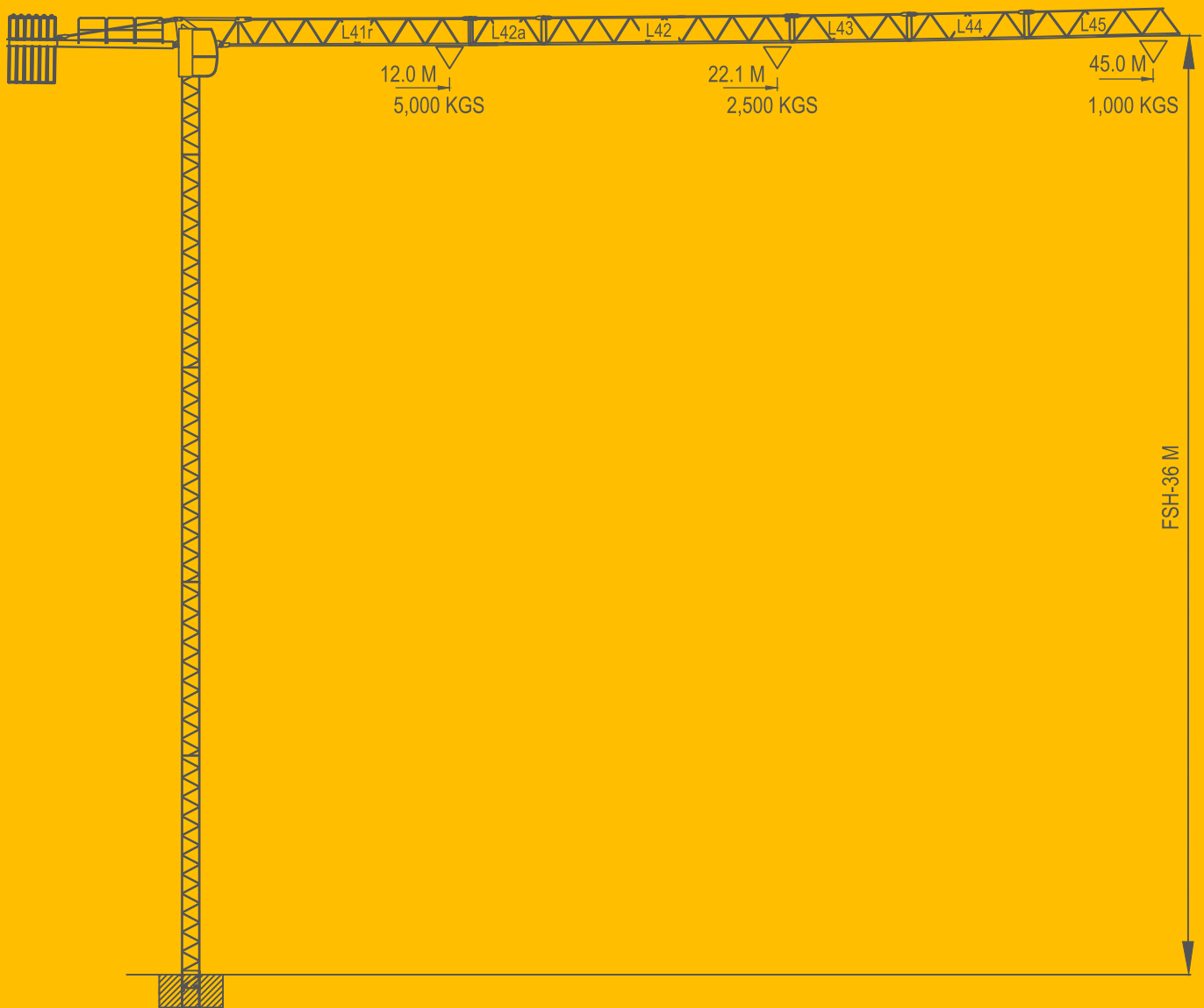


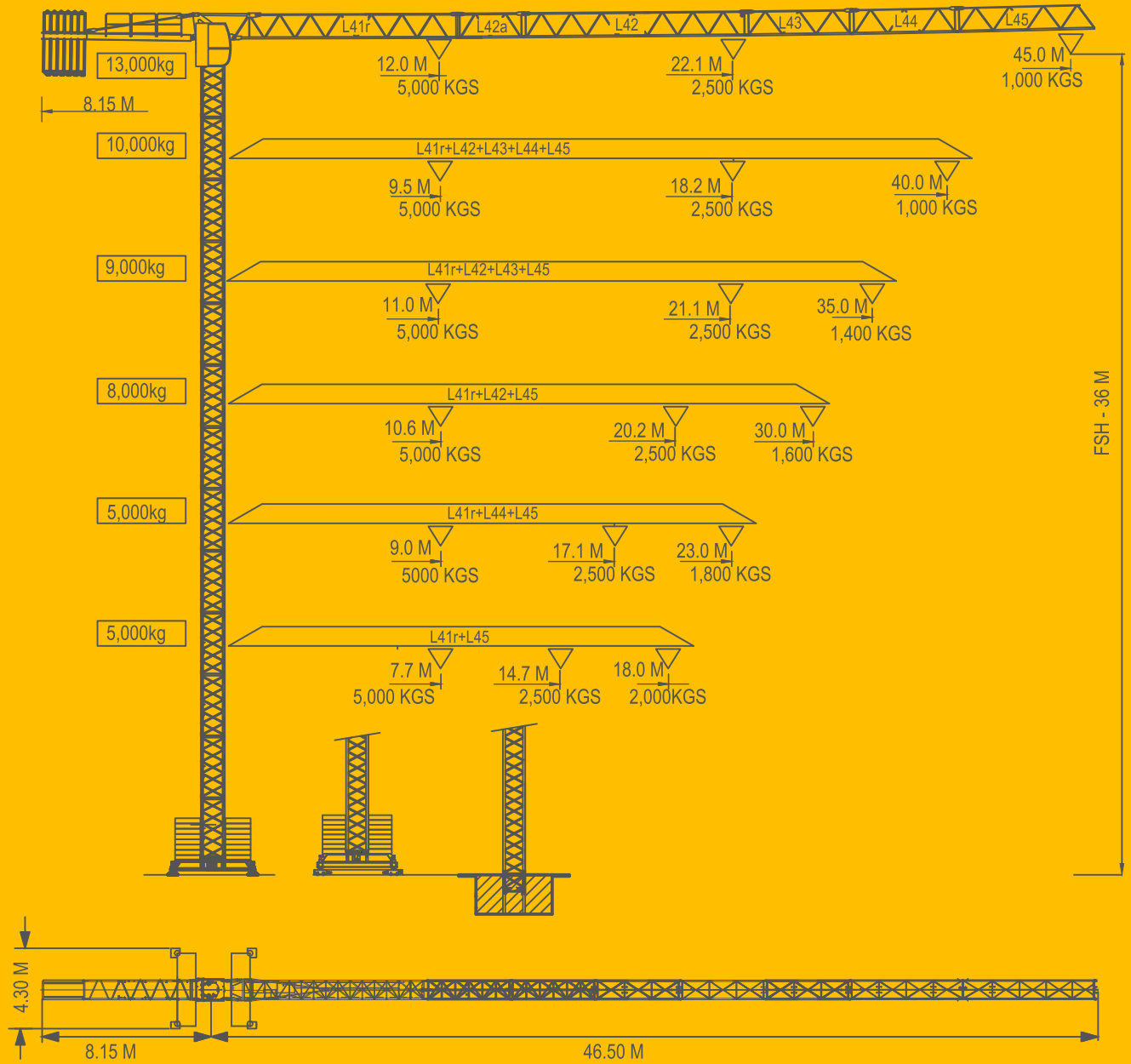
















SGT 4510 TL



FIXED TOWER CRANE SGT 4510 TL

SGT 4510 TL

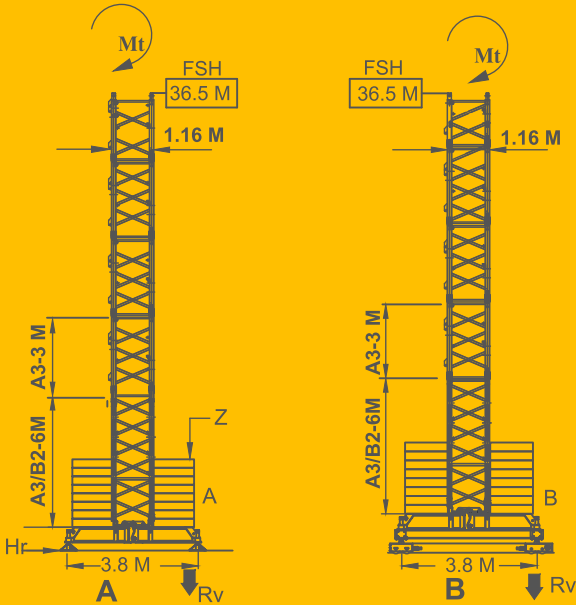


		KG/M	M		14	18	23	30	35	40	45
			5000	2500							
13000 KG 6X2000+1X1000 KG	45 M	L41r+L42a+L42 L43+L44+L45	22.1 M		2500	2500	2380	1720	1410	1180	1000
			12.0 M		4210	3170	2380	1720	1410	1180	1000
10000 KG 5X2000 KG	40 M	L41r+L42+L43 +L44+L45	18.1 M		2500	2500	1900	1400	1100	1000	
			9.5 M		3320	2530	1900	1400	1100	1000	
9000 KG 4X2000+1X1000 KG	35 M	L41r+L42+L43+L45	21.1 M		2500	2500	2200	1600	1400		
			11.0 M		3850	2960	2200	1600	1400		
8000 KG 3X2000+2X1000 KG	30 M	L41r+L42+L45	20.2 M		2500	2500	2100	1600			
			10.6 M		3710	2830	2100	1600			
5000 KG 2X2000+1X1000 KG	23 M	L41r+L44+L45	17.1 M		2500	2300	1800				
			9.0 M		3120	2300	1800				
5000 KG 2X2000+1X1000 KG	18 M	L41r+L45	14.7 M		2500	2000					
			7.7 M		2640	2000					

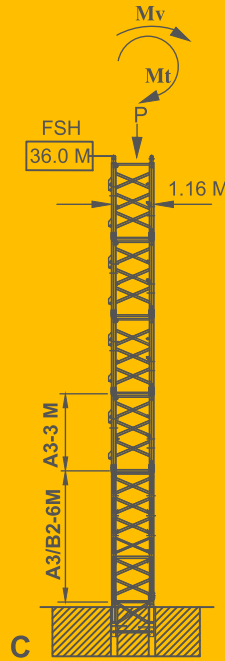
SGT 4510 TL

EXTERNAL CLIMBING ARRANGEMENT

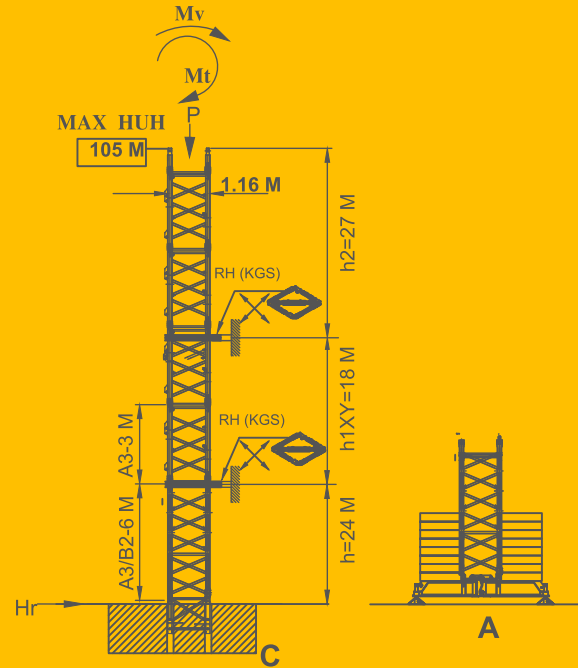
FREE STANDING HEIGHT-FSH



FREE STANDING HEIGHT-FSH



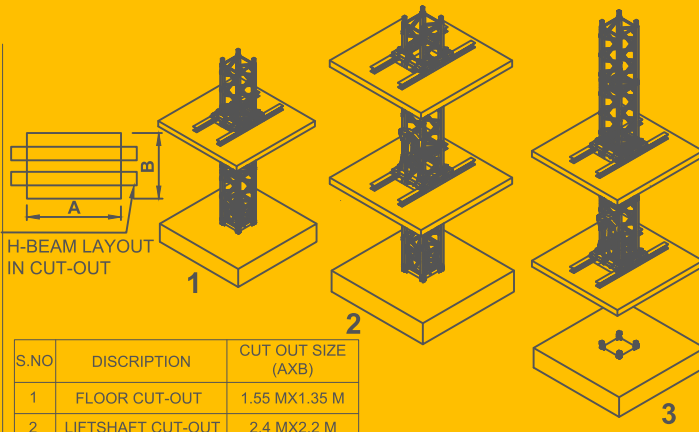
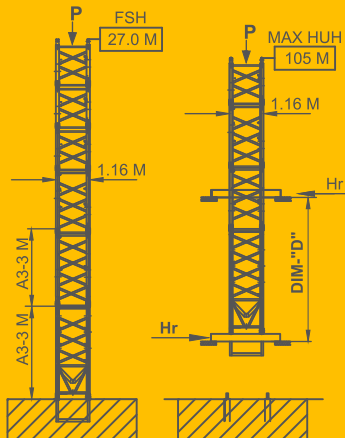
MAX HUH WITH ANCHOR



S.NO.	REACTION	SYMBOL	UNIT	DATA FOR A & B (F.S.H.)		DATA FOR C (F.S.H.)	
				IN SERVICE	OUT OF SERVICE	IN SERVICE	OUT OF SERVICE
1	VERT. REACTION	P	KGS	—	—	28,033	30,135
2	HOR. REACTION	Hr	KGS	4,179	6,830	4,179	6,830
3	SLEW MOMENT	Mt	KG-M	3,670	—	3,670	—
4	MOMENT	Mv	KG-M	—	—	96,432	1,06,626
5	MAX. VERT. REACTION-EACH PAD	Rv	KGS	36,799	40,877	—	—
6	BASE COUNTER WEIGHT	Z	KGS	50,968	50,968	—	—
7	TIE FORCE (HUH) FOR (A&C)	Rh	KGS	—	—	10,601	12,742

REMARKS : DATA FOR MAXIMUM JIB LENGTH & MAXIMUM F.S.H

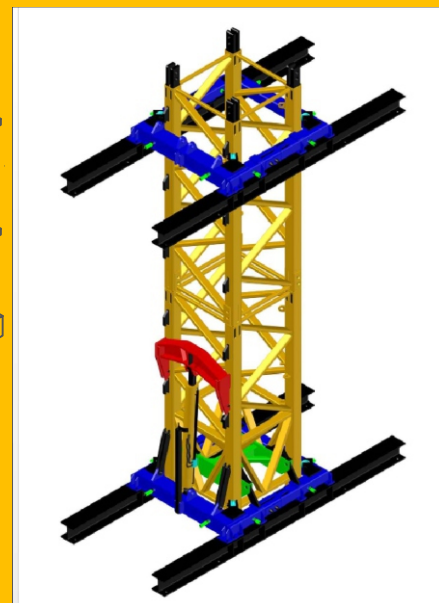
INTERNAL CLIMBING ARRANGEMENT












S.NO	DISCRIPTION	CUT OUT SIZE (AXB)
1	FLOOR CUT-OUT	1.55 MX1.35 M
2	LIFTSHAFT CUT-OUT	2.4 MX2.2 M

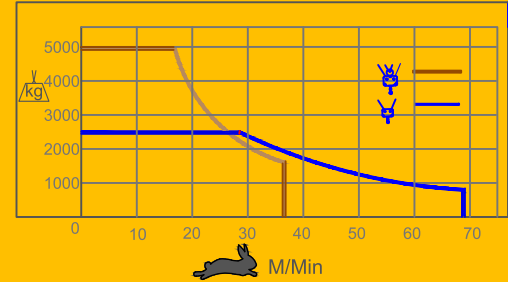
S.NO.	REACTION	SYMBOL	IN SERVICE	UNIT	OUT OF SERVICE	DIM "D"-M
1	VERT. REACTION	P	26,402	KGS	30,479	5.5 M. (MIN.)
2	HOR. REACTION	Hr	17,431	KGS	20,897	8.5 M. (STD)
3	VERT. REACTION	P	26,402	KGS	30,475	
4	HOR. REACTION	Hr	11,280	KGS	20,897	






REMARKS : PLEASE CONSULT ALPHA FOR F.S.H.>27 M & OTHER SPACING DIM. "D".

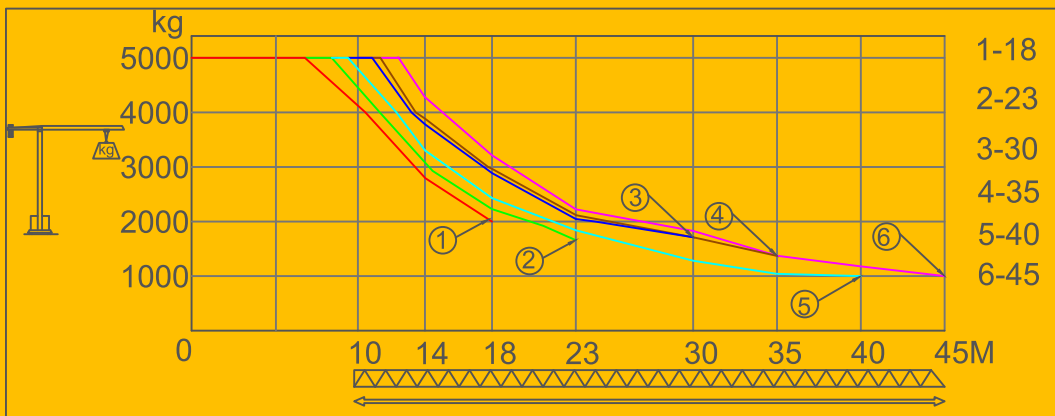


POWER-SUPPLY	HOIST WINCH	THREE -PHASE SUPPLY
20 KVA	ASW 11/1	380V-50Hz

HOIST WINCH	SYMBOL	FALL				POWER-SUPPLY
STD-ASW 11/1		 0-68 M/Min  0-34 M/Min	0-68 M/Min 11.0 KW	STD HUH-77 M	20 KVA	
OPTION- ASW11/2		 SAME AS ABOVE  SAME AS ABOVE	SAME AS ABOVE MAX HUH-105 M	20 KVA		



MECHANISM	SYMBOL		
TROLLEY		0-50 M / MIN	3.0 KW
SLEWING		0-1 RPM	3.7 KW
TRAVELLING		0-15 M / MIN	2X3 KW



OPTIONAL FITMENT: SAFE LOAD INDICATOR (SLI) , DISPLAY UNIT IN CABIN , ANTI COLLISION DEVICE , ANEMOMETR , WIRE LESS REMOTE CONTOL OPERATION.

REMARKS: ALPHA RESERVES THE RIGHT TO ALTER THE SPECIFICATIONS WITHOUT PRIOR INTIMATION. WEIGHT,DIMENSIONS & CAPACTIES MENTIONED HERE IN ARE VARIABLE WITH IN +/-5%. ACCESSORIES , IF ANY SHOWN HERE IN , ARE NOT PART OF STANDARD EQUIPMENT.



CANGRAFT

Auth. Dealer

CANGRAFT EQUIPMENT PRIVATE LIMITED

Office No.16, Wing C, Roshan One, Chakan M.I.D.C

Phase-II Near Podar International School

Varale, Pune-410501

Mobile : +91-8800239853, +91-8800495428

Email : info@cangraftequipment.com

01/11/22

HEAD OFFICE

Plot No-122,Industrial Area,
Phase-IV,Udyog Vihar
Gurugram, Haryana Pin-122015
Phone : 011-26302647,26302517,26302434
E-mail : alpha@alphaservices.co.in
Website : www.alphaservices.co.in

PLANT1

F-84-85,85a & 59A , RIICO Industrial Area
Bhiwadi,Distt.Alwar,Rajsthan-301019
Phone : 01493-221873
E-mail : alpha1@alphaservices.co.in
Website : www.alphaservices.co.in